



# Mcl-1 Monoclonal Antibody

<b>Catalog No</b>	YP-Ab-00073
<b>Isotype</b>	IgG
<b>Reactivity</b>	Human
<b>Applications</b>	WB;IHC;IF;ELISA
<b>Gene Name</b>	MCL1
<b>Protein Name</b>	Induced myeloid leukemia cell differentiation protein Mcl-1
<b>Immunogen</b>	Purified recombinant fragment of human MCL-1 expressed in E. Coli.
<b>Specificity</b>	Mcl-1 Monoclonal Antibody detects endogenous levels of Mcl-1 protein.
<b>Formulation</b>	Purified antibody in PBS containing 0.03% sodium azide.
<b>Source</b>	Monoclonal, Mouse
<b>Purification</b>	Affinity purification
<b>Dilution</b>	Western Blot: 1/500 - 1/2000. Immunohistochemistry: 1/200 - 1/1000. Immunofluorescence: 1/200 - 1/1000. ELISA: 1/10000. Not yet tested in other applications.
<b>Concentration</b>	1 mg/ml
<b>Purity</b>	≥90%
<b>Storage Stability</b>	-20°C/1 year
<b>Synonyms</b>	MCL1; BCL2L3; Induced myeloid leukemia cell differentiation protein Mcl-1; Bcl-2-like protein 3; Bcl2-L-3; Bcl-2-related protein EAT/mcl1; mcl1/EAT
<b>Observed Band</b>	About 40kd in human,39kd in mouse and rat
<b>Cell Pathway</b>	Membrane ; Single-pass membrane protein . Cytoplasm. Mitochondrion. Nucleus, nucleoplasm. Cytoplasmic, associated with mitochondria.
<b>Tissue Specificity</b>	Ewing sarcoma,Mammary gland,Myeloid leukemia cell,Neuroblastoma,Placenta,Th
<b>Function</b>	function:Involved in the regulation of apoptosis versus cell survival, and in the maintenance of viability but not of proliferation. Mediates its effects by interactions with a number of other regulators of apoptosis. Isoform 1 inhibits apoptosis while isoform 2 promotes it.,induction:Expression increases early during phorbol-ester induced differentiation along the monocyte/macrophage pathway in myeloid leukemia cell lines ML-1. Rapidly up-regulated by CSF2 in ML-1 cells. Up-regulated by heat-shock induced differentiation. Expression increases early during retinoic acid-induced differentiation.,PTM:Cleaved by CASP3 during apoptosis. In intact cells cleavage occurs preferentially after Asp-127, yielding a pro-apoptotic 28 kDa C-terminal fragment.,PTM:Phosphorylated on Thr-163. Treatment with taxol or okadaic acid induces phosphorylation on additional sites.,PTM:Rapidly degraded in the abs
<b>Background</b>	This gene encodes an anti-apoptotic protein, which is a member of the Bcl-2 family. Alternative splicing results in multiple transcript variants. The longest gene



product (isoform 1) enhances cell survival by inhibiting apoptosis while the alternatively spliced shorter gene products (isoform 2 and isoform 3) promote apoptosis and are death-inducing. [provided by RefSeq, Oct 2010],

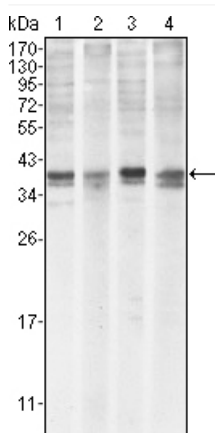
#### matters needing attention

Avoid repeated freezing and thawing!

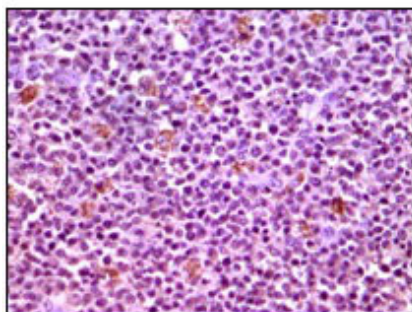
#### Usage suggestions

This product can be used in immunological reaction related experiments. For more information, please consult technical personnel.

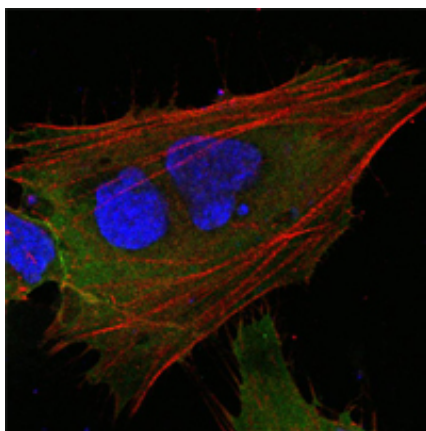
### Products Images



Western Blot analysis using Mcl-1 Monoclonal Antibody against HeLa (1), BCBL-1 (2), Jurkat (3) and HL60 (4) cell lysate.



Immunohistochemistry analysis of paraffin-embedded human lymphnode tissues with DAB staining using Mcl-1 Monoclonal Antibody.



Confocal immunofluorescence analysis of HepG2 cells using Mcl-1 Monoclonal Antibody (green). Red: Actin filaments have been labeled with DY-554 phalloidin. Blue: DRAQ5 fluorescent DNA dye.